

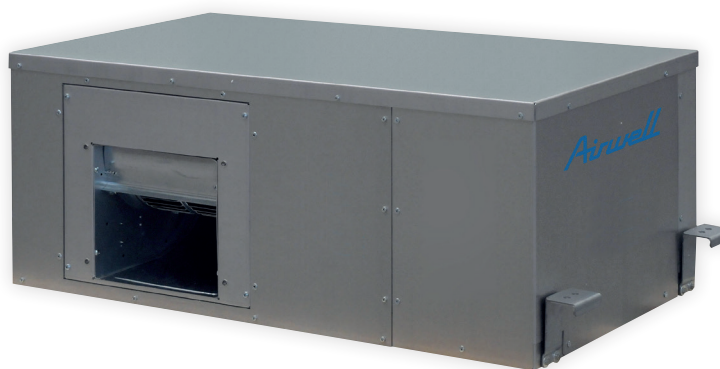


Fixed speed  
Cooling & heating

Airwell

# DFMO 22 TO 41

## Water-loop heat pump



Remote control  
included

### + PRODUCT

- Remote control included
- Solution without outdoor unit
- Monobloc
- Compact design
- Wide capacity range
- Thermostat included (ref. 7ACEL1880)

### FEATURES

#### TECHNOLOGY



ELECTRONIC  
EXPANSION VALVE

### THE + «SUSTAINABLE DEVELOPMENT»

> High efficiency.

### THE + «USER»

> Fire classification: M0 (ERP compatible).

### THE + «INSTALLER»

> Alarm output for fault reporting.

### THE + «TECHNOLOGY»

> Integrated temperature sensors for optimized consumption.

### TECHNICAL DATA

INDOOR UNIT		DFMO-022N-01M25	DFMO-031N-01M25	DFMO-041N-01M25
Part number		7MB030001	7MB030002	7MB030003
Phase		Single phase	Single phase	Single phase
COOLING				
Rated power (1)	kW	2.26	3.16	4.16
Rated sensitive power	kW	1.91	2.75	3.50
Totale power input	kW	0.54	0.74	0.92
EER		4.22	4.28	4.51
HEATING - AIR AT 20 °C - WATER AT 20 °C				
Rated power (2)	kW	2.76	3.85	4.92
Totale power input	kW	0.55	0.77	1.06
COP		4.99	4.97	4.66
HEATING - AIR AT 20 °C - WATER AT 15 °C				
Rated power (3)	kW	2.46	3.33	4.42
Totale power input	kW	0.55	0.73	1.02
COP		4.42	4.47	4.30
INDOOR UNIT				
Sound pressure level at 1 m	dB(A)	33	34	35
Number of compressor	nb	1	1	1
Compressor type			Rotary	
Airflow	m <sup>3</sup> /h	533	612	800
Fan type			Centrifugal	
Number of fan	nb	1	1	1
External static pressure	Pa	40 (0-80)	40 (0-80)	40 (0-80)
Water inlet flow (4)	l/s	0.13	0.18	0.24
Outline dimensions (WxHxD)	mm	1034x361x513	1034x361x513	1034x386x513
Net weight/Gross weight	kg	71/81	74/84	82/92
POWER SUPPLY				
Phase/Voltage/Frequency		1P/230V/50Hz	1P/230V/50Hz	1P/230V/50Hz
ERP DATA (5)				
SEER		3.75	3.90	4.18
SCOP		3.41	3.63	4.05
PIPE LINE				
Refrigerant/GWP		R410A/2088	R410A/2088	R410A/2088
Charge	kg	0.47	0.64	1.30

### OPTIONS

#### ACCESSORY

Modbus DFMO 22 to 41  
Modulating valve DFMO 22 to 41

#### PART NUMBER

7ACEL1881  
7ACFH0850

(1) Ambient air at 27°C DB/19°C WB. Exchanger water inlet/outlet temperature 30°C/35°C.

(2) Ambient air at 20°C DB. Exchanger water inlet temperature 20°C. The exchanger water outlet temperature is obtained as a function of the cooling water flow rate.

(3) Ambient air at 20°C DB. Exchanger water inlet temperature 15°C. The exchanger water outlet temperature is obtained as a function of the cooling water flow rate.

(4) Water flow rate calculated based on the cooling performance.

(5) Data calculated according to EN14825:2016.



Fixed speed  
Cooling & heating

# DFMO 45 TO 250

## Water-loop heat pump



Remote control included

### + PRODUCT

- Remote control included
- Solution without outdoor unit
- Monobloc
- Compact design
- Wide capacity range
- Thermostat included (ref. 7ACEL1880)

### THE «SUSTAINABLE DEVELOPMENT»

> High efficiency.

### THE «USER»

> Fire classification: M0 (ERP compatible).

### THE «INSTALLER»

> Alarm output for fault reporting.

### THE «TECHNOLOGY»

> Integrated temperature sensors for optimized consumption.

### TECHNICAL DATA

INDOOR UNIT		DFMO-045N-01M25	DFMO-080N-01M25	DFMO-100N-01M25	DFMO-170N-01T35	DFMO-250N-01M25
Part number		7MB030004	7MB030005	7MB030006	7MB030007	7MB030008
Phase		Single phase	Single phase	Single phase	Three phase	Three phase
<b>COOLING</b>						
Rated power	kW	4.56	8.08	10.60	16.90	25.00
Rated sensitive power	kW	3.74	6.44	8.84	13.90	20.00
Totale power input	kW	1.30	2.07	3.04	4.15	5.85
EER		3.52	3.90	3.53	4.07	4.27
<b>HEATING</b>						
Rated power	kW	7.55	10.30	14.40	23.10	33.20
Totale power input	kW	1.75	2.39	3.35	5.23	7.21
COP		4.30	4.31	4.30	4.41	4.60
<b>INDOOR UNIT</b>						
Sound pressure level at 1m (3)	dB(A)	42	42	44	45	45
Number of compressor	nb	1	1	1	1	1
Compressor type		Rotary	Rotary	Rotary	Scroll	Scroll
Airflow	m <sup>3</sup> /h	1000	1500	2800	3800	4900
Fan type		Centrifugal				
Number of fan	nb	1	1	1	1	1
External static pressure (4)	Pa	250	270	290	310	220
Water inlet flow	l/s	0.27	0.47	0.64	1.00	1.47
Outline dimensions (WxHxD)	mm	962x490x692	962x490x692	1167x590x802	1167x590x802	1467x705x927
Net weight/Gross weight	kg	98/102	103/107	138/143	151/156	200/225
<b>POWER SUPPLY</b>						
Phase/Voltage/Frequency		1P/230V/50Hz	1P/230V/50Hz	1P/230V/50Hz	3P/400V/50Hz/N	3P/400V/50Hz/N
<b>ERP DATA (5)</b>						
SEER		3.28	3.93	3.57	4.23	4.47
SCOP		3.81	3.82	3.81	3.91	4.08
<b>PIPE LINE</b>						
Refrigerant/GWP		R410A/2088				
Charge	kg	0.70	0.95	1.10	1.30	3.20

### OPTIONS

#### ACCESSORY

Modulating valve DFMO 45-170	
Modulating valve DFMO 250	

#### PART NUMBER

7ACFH0851
7ACFH0852

- (1) Ambient air at 27°C DB/19°C WB. Exchanger water inlet/outlet temperature 30°C/35°C.
- (2) Ambient air at 20°C DB. Exchanger water inlet temperature 20°C. The exchanger water outlet temperature is obtained as a function of the cooling water flow rate.
- (3) Ambient air at 20°C DB. Exchanger water inlet temperature 15°C. The exchanger water outlet temperature is obtained as a function of the cooling water flow rate.
- (4) Water flow rate calculated based on the cooling performance.
- (5) Data calculated according to EN14825: 2016.

GRUPE AIRWELL

10, RUE DU FORT DE SAINT CYR - 78180 MONTIGNY LE BRETONNEUX, FRANCE

TEL.: +33 (0)1 76 21 82 00 - www.airwell.com