



DC Inverter
Reversible

Airwell



ZDAA Multisplit



Compatible
WITH:

> High wall HDHC Artica
25/35/50/70



> High wall HDMB
Harmonia
25/35/50/70



White



Mirror



Grey

> High wall HDLA
22/25/35/50/70



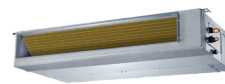
> Console XDMX
35/50



> Floor ceiling
FDMX 50/70



> Ducted DDMX
22/35/50/70



> Cassette CDMX
22/25/35/50/70



+ PRODUCT

- Flexy Match (compatible with most of the range)
- Total piping length up to 80 m
- High capacity compared with market average
- Electronic expansion valve

FEATURES

TECHNOLOGY



ELECTRONIC
EXPANSION VALVE



GOLDEN FIN
TREATMENT

INSTALLER FUNCTIONS



AUTO-DIAGNOSTIC

CERTIFICATION

- AIRWELL participates in the ECP programme for ACI. Check ongoing validity of certificate:

www.eurovent-certification.com



- Models marked * are not Eurovent certified

+ "SUSTAINABLE DEVELOPMENT"

- > High energy label A++ (cooling mode) / A+ (heating mode).
- > Energy savings (heating mode only, setpoint limits).

+ "USER"

- > A large choice of indoor units.
- > Small footprint with a single outdoor unit.

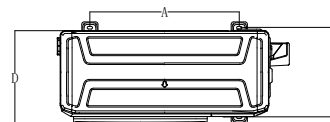
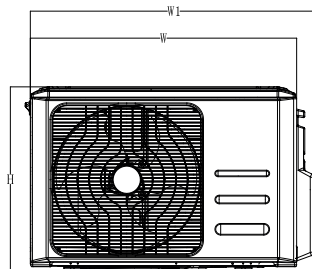
+ "INSTALLER"

- > Scalable and flexible installation.
- > Long piping.

+ "TECHNOLOGY"

- > High corrosion resistance with the Golden Fin.
- > Refrigerant leak detection.

TECHNICAL DRAWS



DIMENSIONS (mm)

MODEL	W	D	H	W1	A	B
ZDAA-2040-09M25	805	330	554	877	511	317
ZDAA-2050-09M25	805	330	554	877	511	317
ZDAA-3080-09M25	890	342	673	990	663	354
ZDAA-4090-09M25	946	410	810	1034	673	403
ZDAA-5130-09M25	946	410	810	1034	673	403

TECHNICAL DATA

		NEW				
OUTDOOR UNIT		ZDAA-2040-09M25	ZDAA-2050-09M25	ZDAA-3080-09M25	ZDAA-4090-09M25*	ZDAA-5130-09M25*
Part number		7SP091194	7SP091195	7SP091196	7SP091197	7SP091198
Phase		Single-phase	Single-phase	Single-phase	Single-phase	Single-phase
COOLING						
Rated power (min./max.)	kW	4.10 (1.47~4.69)	5.28 (2.28~5.70)	7.91 (3.08~8.21)	10.55 (2.05~10.55)	12.31 (3.17~12.31)
Pdesignc	kW	4.10	5.30	7.90	10.50	12.30
Rated power input	kW	1.27	1.63	2.45	3.52	3.81
SEER/Energy label		6.1/A++	6.3/A++	6.3/A++	6.3/A++	6.1/A++
Operating limits	°C	-15°/50° Dry bulb				
HEATING						
Rated power (min./max.)	kW	4.40 (1.62~4.99)	5.57 (2.40~5.74)	8.21 (2.40~8.21)	10.55 (2.34~11.14)	12.31 (3.37~12.31)
Pdesignh (average climate)	kW	3.90	4.50	5.70	8.80	9.50
Pdesignh (warmer climate)		4.10	5.00	6.00	9.80	9.80
Rated power input	kW	1.18	1.50	2.21	2.88	3.31
SCOP/Energy label (average climate)		3.8/A	4.0/A+	4.0/A+	4.0/A+	3.8/A
SCOP/Energy label (warmer climate)		5.1/A+++	5.1/A+++	5.1/A+++	5.1/A+++	5.1/A+++
Power at -7°C	kW	4.09	4.90	6.73	8.23	8.74
Power at -10°C	kW	3.21	3.62	5.66	6.86	7.39
Power at -15°C	kW	2.86	3.23	5.09	6.44	7.02
Operating limits	°C	-15°/24° Dry bulb				
OUTDOOR UNIT						
Sound pressure level at 1 m	dB(A)	54	54	56	57	56
Sound level	dB(A)	65	65	68	69	69
Airflow	m³/h	2100	2100	3000	4000	3850
Compressor type		Rotary	Rotary	Rotary	Rotary	Rotary
Outline dimensions (WxHxD)	mm	805x554x330	805x554x330	890x673x342	946x810x410	946x810x410
Package dimensions (WxHxD)	mm	915x615x370	915x615x370	1030x750x438	1090x875x500	1090x875x500
Net weight/Gross weight	kg	32/35	35/38	48/51.8	68.8/75.6	73.3/80.4
POWER SUPPLY						
Phase/Voltage/Frequency		1P/230V/50Hz	1P/230V/50Hz	1P/230V/50Hz	1P/230V/50Hz	1P/230V/50Hz
Power supply side		Outdoor	Outdoor	Outdoor	Outdoor	Outdoor
Power cable section	mm²	3G1.5	3G1.5	3G2.5	3G4	3G4
Fuse rating am	A	16	16	20	25	25
Electrical connections in/out	mm²	2 x (4G1.5)	2 x (4G1.5)	3x (4G1.5)	4 x (4G1.5)	5 x (4G1.5)
PIPE LINE						
Suction pipe diameter	inches	2x3/8"	2x3/8"	3x3/8"	3x3/8"+1x1/2"	4x3/8"+1x1/2"
Liquid pipe diameter	inches	2x1/4"	2x1/4"	3x1/4"	4x1/4"	5x1/4"
Max. length	m	40	40	60	80	80
Max. length per circuit	m	25	25	30	35	35
Max. height between indoor and outdoor unit	Outdoor unit higher than indoor unit	m	15	15	15	15
	Outdoor unit lower than indoor unit	m	15	15	15	15
Max. height between indoor units	m	10	10	10	10	10
Refrigerant/GWP		R32/675	R32/675	R32/675	R32/675	R32/675
Charge	kg	1.10	1.25	1.85	2.10	2.90
Totale length charge	m	15	15	22.5	30	37.5
Additional charge	g/m	12	12	12	12	12



High wall HDHC Artica
25/35/50/70

INDOOR UNIT		HDHC-025N-09M25	HDHC-035N-09M25	HDHC-050N-09M25	HDHC-070N-09M25
Part number		7SP023280	7SP023281	7SP023282	7SP023283
Phase		Single-phase	Single-phase	Single-phase	Single-phase
Cooling rated power	kW	2.73	3.52	5.28	7.03
Heating rated power	kW	3.14	3.96	5.57	7.33
Sound pressure level at 1 m (VL/LS/MS/HS)	dB(A)	20/22/32/37	21/22/33/40	22/23/35/41	21/33/40/44
Sound level	dB(A)	58	59	59	64
Airflow (LS/MS/HS)	m ³ /h	280/360/530	290/380/560	400/580/685	379/724/1092
Dehumidification	l/h	1.00	1.20	1.80	2.40
Outline dimensions (WxHxD)	mm	855x297x231	855x297x231	1023x319x245	1196x370x275
Package dimensions (WxHxD)	mm	920x305x370	920x305x370	1095x325x400	1280x355x455
Net weight/Gross weight	kg	11/14.2	11/14.2	13.2/17.7	21.1/29.3

PIPE LINE

Suction pipe diameter	inches	3/8"	3/8"	1/2"	5/8"
Liquid pipe diameter	inches	1/4"	1/4"	1/4"	3/8"



High wall
HDMB Harmonia
White 25/35/50/70



High wall
HDMB Harmonia
Mirror 25/35/50/70



High wall
HDMB Harmonia
Grey 25/35/50/70

INDOOR UNIT - WHITE		HDMB-025N-09M22	HDMB-035N-09M22	HDMB-050N-09M22	HDMB-070N-09M22
Indoor unit part number - White		7SP023235	7SP023236	7SP023237	7SP023238
INDOOR UNIT - GREY		HDMB-025N-09M22-GY	HDMB-035N-09M22-GY	HDMB-050N-09M22-GY	HDMB-070N-09M22-GY
Indoor unit part number - Grey		7SP023244	7SP023245	7SP023246	7SP023247
INDOOR UNIT - MIRROR		HDMB-025N-09M22-MR	HDMB-035N-09M22-MR	HDMB-050N-09M22-MR	HDMB-070N-09M22-MR
Indoor unit part number - Mirror		7SP023240	7SP023241	7SP023242	7SP023243
Phase		Single-phase	Single-phase	Single-phase	Single-phase
Cooling rated power	kW	2.64	3.51	5.27	7.03
Heating rated power	kW	2.92	3.81	5.57	7.33
Sound pressure level at 1 m (VL/LS/MS/HS)	dB(A)	20/24/29/36	21/25/33/39	22/28/33/43	25/30/41/47
Sound level	dB(A)	55	55	58	63
Airflow (LS/MS/HS)	m ³ /h	303/362/483	395/477/584	420/500/730	640/830/1020
Dehumidification	l/h	0.90	1.20	1.80	2.40
Outline dimensions (WxHxD)	mm	802x297x189	802x297x189	965x319x215	1080x335x226
Package dimensions (WxHxD)	mm	875x380x285	875x380x285	1045x410x305	1155x320x415
Net weight/Gross weight	kg	8.6/11.3	8.6/11.3	10.9/12.5	13.7/17.5
Panel part number - Silver Grey		7ACTL0551	7ACTL0551	7ACTL0552	7ACTL0553
Panel part number - Champagne Beige		7ACTL0543	7ACTL0543	7ACTL0544	7ACTL0545
Panel part number - Passion Red		7ACTL0547	7ACTL0547	7ACTL0548	7ACTL0549

PIPE LINE

Suction pipe diameter	inches	3/8"	3/8"	1/2"	5/8"
Liquid pipe diameter	inches	1/4"	1/4"	1/4"	3/8"



High wall HDLA
22/25/35/50/70

NEW

INDOOR UNIT		HDLA-022N-09M25	HDLA-025N-09M25	HDLA-035N-09M25	HDLA-050N-09M25	HDLA-070N-09M25
Part number		7SP023249	7SP023250	7SP023251	7SP023252	7SP023253
Phase		Single-phase	Single-phase	Single-phase	Single-phase	Single-phase
Cooling rated power	kW	2.05	2.64	3.52	5.28	7.03
Heating rated power	kW	2.34	2.93	3.81	5.57	7.33
Sound pressure level at 1 m (VL/LS/MS/HS)	dB(A)	21/26/30/40	21/25/32/38.5	21/25/34.5/40.5	20/26/36/42.5	36/40.5/45
Sound level	dB(A)	54	54	55	56	59
Airflow (LS/MS/HS)	m ³ /h	325/360/460	325/360/466	325/430/540	540/680/840	662/817/980
Dehumidification	l/h	0.7	0.9	1.2	1.8	2.4
Outline dimensions (WxHxD)	mm	805x285x194	805x285x194	805x285x194	957x302x213	1040x327x220
Package dimensions (WxHxD)	mm	870x365x270	870x365x270	870x365x270	1035x385x295	1120x315x405
Net weight/Gross weight	kg	7.5/9.8	7.5/9.8	7.6/9.9	10.0/12.1	12.3/15.8

PIPE LINE

Suction pipe diameter	inches	3/8"	3/8"	3/8"	1/2"	5/8"
Liquid pipe diameter	inches	1/4"	1/4"	1/4"	1/4"	3/8"



Console
XDMX 35/50

INDOOR UNIT		XDMX-035N-09M25	XDMX-050N-09M25
Part number		7SP071435	7SP071436
Phase		Single-phase	Single-phase
Cooling rated power	kW	3.52	4.98
Heating rated power	kW	3.81	5.28
Sound pressure level at 1 m (LS/MS/HS)	dB(A)	27/34/37	32/38/41
Sound level	dB(A)	54	55
Airflow (LS/MS/HS)	m ³ /h	490/580/650	600/690/780
Dehumidification	l/h	1.2	1.8
Outline dimensions (WxHxD)	mm	794x621x200	794x621x200
Package dimensions (WxHxD)	mm	865x280x719	865x280x719
Net weight/Gross weight	kg	14.9/18.8	14.9/18.8

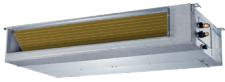
PIPE LINE

Suction pipe diameter	inches	3/8"	1/2"
Liquid pipe diameter	inches	1/4"	1/4"



Floor ceiling
FDMX 50/70

INDOOR UNIT		FDMX-050N-09M25	FDMX-070N-09M25
Part number		7SP012300	7SP012301
Phase		Single-phase	Single-phase
Cooling rated power	kW	5.28	7.03
Heating rated power	kW	5.57	7.62
Sound pressure level at 1 m (LS/MS/HS)	dB(A)	37/41/44	43/47/51
Sound level	dB(A)	59	55
Airflow (LS/MS/HS)	m ³ /h	723/839/958	853/1023/1192
Dehumidification	l/h	1.80	2.40
Outline dimensions (WxHxD)	mm	1068x675x235	1068x675x235
Package dimensions (WxHxD)	mm	1145x755x318	1145x755x318
Net weight/Gross weight	kg	28/33.4	28/33.2
PIPE LINE			
Suction pipe diameter	inches	1/2"	5/8"
Liquid pipe diameter	inches	1/4"	3/8"



Ducted DDMX*
22/35/50/70

		NEW			
INDOOR UNIT		DDMX-022N-09M25	DDMX-035N-09M25	DDMX-050N-09M25	DDMX-070N-09M25
Part number		7SP033069	7SP033070	7SP033071	7SP033072
Phase		Single-phase	Single-phase	Single-phase	Single-phase
Cooling rated power	kW	2.05	3.52	5.28	7.03
Heating rated power	kW	2.34	3.81	5.57	7.62
Sound pressure level at 1 m (VL/LS/MS/HS)	dB(A)	23/27/34/40	23/29/30/34	23/29/30/34	27/37/42/40
Sound level	dB(A)	58	58	58	62
Airflow (LS/MS/HS)	m ³ /h	230/340/500	300/480/600	515.2/706/911	825.1/1035/1229
External static pressure (standard/max.)	Pa	25/0-40	25/0-60	25/0-100	25/0-160
Dehumidification	l/h	0.7	1.20	1.80	2.40
Outline dimensions (WxHxD)	mm	700x200x506	700x200x506	880x210x674	1100x249x774
Package dimensions (WxHxD)	mm	860x285x540	860x285x540	1070x280x725	1305x315x805
Net weight/Gross weight	kg	17.8/25.2	17.8/21.5	24.4/29.6	32.3/39.1
PIPE LINE					
Suction pipe diameter	inches	3/8"	3/8"	1/2"	5/8"
Liquid pipe diameter	inches	1/4"	1/4"	1/4"	3/8"



Cassette CDMX
22/25/35/50/70

		NEW				
INDOOR UNIT		CDMX-022N-09M25	CDMX-025N-09M25	CDMX-035N-09M25	CDMX-050N-09M25	CDMX-070N-09M25
Part number		7SP042289	7SP042290	7SP042291	7SP042292	7SP042293
Phase		Single-phase	Single-phase	Single-phase	Single-phase	Single-phase
Cooling rated power	kW	2.05	2.60	3.52	5.28	7.03
Heating rated power	kW	2.35	2.90	3.81	5.57	7.62
Sound pressure level at 1 m (LS/MS/HS)	dB(A)	29/33/38	31/34/39	34/37/42	39/44/45	42/47/50
Sound level	dB(A)	53	54	57	59	59
Airflow (LS/MS/HS)	m ³ /h	400/460/500	400/504/580	389/485/569	479/584/680	992/1118/1247
Dehumidification	l/h	0.7	1.20	1.50	2.00	3.00
Outline dimensions (WxHxD)	mm	570x260x570	570x260x570	570x260x570	570x260x570	830x205x830
Package dimensions (WxHxD)	mm	662x317x662	662x317x662	662x317x662	662x317x662	910x250x910
Net weight/Gross weight	kg	14.5/17.3	14.5/17.3	16.3/20.4	16/22.1	21.6/25.4
PANEL						
Outline dimensions (WxHxD)	mm	647x50x647	647x50x647	647x50x647	647x50x647	950x55x950
Package dimensions (WxHxD)	mm	715x123x715	715x123x715	715x123x715	715x123x715	1035x90x1035
Net weight/Gross weight	kg	2.5/4.5	2.5/4.5	2.5/4.5	2.5/4.5	6/9
Panel part number		7ACVF0566	7ACVF0566	7ACVF0566	7ACVF0566	7ACVF0600
PIPE LINE						
Suction pipe diameter	inches	3/8"	3/8"	3/8"	1/2"	5/8"
Liquid pipe diameter	inches	1/4"	1/4"	1/4"	1/4"	3/8"

ZDAA

Combination capacities



Compatible
WITH:

> High wall HDHC Artica
25/35/50



> High wall HDMB
Harmonia
25/35/50



White



Mirror



Grey

> High wall HDLA
22/25/35/50



> Console XDMX
35/50



> Floor ceiling
FDMX 50



> Ducted DDMX
22/35/50



> Cassette CDMX
22/25/35/50



ZDAA-2040 MULTISPLIT DUO

Indoor unit combination	COOLING										HEATING									
	Rated power (kW)		Total power (kW)			Total input power (kW)			EER	SEER/ Energy label	Rated power (kW)		Total power (kW)			Total input power (kW)			COP	SCOP/ Energy label
	Unit A	Unit B	Min.	Rated	Max.	Min.	Rated	Max.			Unit A	Unit B	Min.	Rated	Max.	Min.	Rated	Max.		
22	2.00	-	1.23	2.00	2.90	0.30	0.62	0.77	3.25	-	2.45	-	1.32	2.50	2.82	0.28	0.67	0.83	3.75	-
25	2.50	-	1.23	2.50	3.20	0.30	0.77	0.96	3.25	-	2.92	-	1.32	2.90	3.36	0.28	0.78	0.97	3.73	-
35	3.50	-	1.23	3.50	3.90	0.30	1.08	1.35	3.25	-	3.75	-	1.32	3.80	4.31	0.28	1.02	1.28	3.72	-
50	4.10	-	1.35	4.10	4.90	0.40	1.27	1.59	3.23	-	4.40	-	1.45	4.40	5.24	0.38	1.19	1.48	3.71	-
22+22	2.05	2.05	1.76	4.10	4.92	0.44	1.27	1.59	3.23	6.8/A++	2.20	2.20	1.89	4.40	5.28	0.42	1.19	1.48	3.71	4.0/A+
22+25	1.79	2.31	1.76	4.10	4.92	0.44	1.27	1.59	3.23	6.8/A++	1.93	2.48	1.89	4.40	5.28	0.42	1.19	1.48	3.71	4.0/A+
22+35	1.51	2.59	1.76	4.10	4.92	0.44	1.27	1.59	3.23	6.8/A++	1.62	2.78	1.89	4.40	5.28	0.42	1.19	1.48	3.71	4.0/A+
25+25	2.05	2.05	1.76	4.10	4.92	0.44	1.27	1.59	3.23	6.8/A++	2.20	2.20	1.89	4.40	5.28	0.42	1.19	1.48	3.71	4.0/A+
25+35	1.76	2.34	1.76	4.10	4.92	0.44	1.27	1.59	3.23	6.8/A++	1.89	2.51	1.89	4.40	5.28	0.42	1.19	1.48	3.71	4.0/A+

Based on HDMB Harmonia wall mounted combination

ZDAA-2050 MULTISPLIT DUO

Indoor unit combination	COOLING										HEATING									
	Rated power (kW)		Total power (kW)			Total input power (kW)			EER	SEER/ Energy label	Rated power (kW)		Total power (kW)			Total input power (kW)			COP	SCOP/ Energy label
	Unit A	Unit B	Min.	Rated	Max.	Min.	Rated	Max.			Unit A	Unit B	Min.	Rated	Max.	Min.	Rated	Max.		
22	2.00	-	1.43	2.00	2.90	0.35	0.60	0.75	3.35	-	2.50	-	1.56	2.50	3.03	0.32	0.67	0.83	3.75	-
25	2.50	-	1.43	2.50	3.20	0.35	0.75	0.93	3.35	-	3.00	-	1.56	3.00	3.63	0.32	0.80	1.00	3.75	-
35	3.50	-	1.43	3.50	3.90	0.35	1.08	1.29	3.25	-	3.80	-	1.56	3.80	4.60	0.32	1.00	1.20	3.81	-
50	5.00	-	1.64	5.00	5.51	0.45	1.55	1.89	3.23	-	5.20	-	1.73	5.20	5.79	0.42	1.35	1.88	3.85	-
22+22	2.65	2.65	2.12	5.30	5.62	0.54	1.64	2.05	3.23	6.1/A++	2.50	2.50	2.23	5.00	6.04	0.51	1.35	1.88	3.71	4.0/A+
22+25	2.32	2.98	2.12	5.30	5.83	0.54	1.64	2.05	3.23	6.1/A++	2.32	2.98	2.23	5.30	6.12	0.51	1.43	1.88	3.71	4.0/A+
22+35	1.95	3.35	2.12	5.30	6.41	0.54	1.64	2.05	3.23	6.1/A++	2.03	3.47	2.23	5.50	6.36	0.51	1.48	1.88	3.71	4.0/A+
22+50	1.48	3.85	2.12	5.30	6.47	0.54	1.64	2.05	3.23	6.1/A++	1.60	4.14	2.23	5.70	6.60	0.51	1.54	1.88	3.71	4.0/A+
25+25	2.65	2.65	2.12	5.3	6.41	0.54	1.64	2.05	3.23	6.3/A++	2.78	2.78	2.23	5.57	6.68	0.51	1.50	1.88	3.71	4.0/A+
25+35	2.27	3.03	2.12	5.3	6.41	0.54	1.64	2.05	3.23	6.3/A++	2.39	3.18	2.23	5.57	6.68	0.51	1.50	1.88	3.71	4.0/A+
25+50	1.77	3.53	2.12	5.3	6.47	0.54	1.64	2.05	3.23	6.3/A++	1.86	3.71	2.23	5.57	6.68	0.51	1.50	1.88	3.71	4.0/A+
35+35	2.65	2.65	2.12	5.3	6.41	0.54	1.64	2.05	3.23	6.3/A++	2.79	2.79	2.23	5.57	6.68	0.51	1.50	1.88	3.71	4.0/A+

Based on HDMB Harmonia wall mounted combination

Optimum combinations

ZDAA

Combination capacities



Compatible
WITH:

> High wall HDHC Artica
25/35/50



> High wall HDMB
Harmonia
25/35/50



White



Mirror



Grey

> High wall HDLA
22/25/35/50



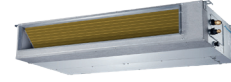
> Console XDMX
35/50



> Floor ceiling
FDMX 50



> Ducted DDMX
22/35/50



> Cassette CDMX
22/25/35/50



ZDAA-3080 MULTISPLIT TRIO

Indoor unit combination	COOLING										HEATING											
	Rated power (kW)			Total power (kW)			Total input power (kW)			EER	SEER/ Energy label	Rated power (kW)			Total power (kW)			Total input power (kW)			COP	SCOP/ Energy label
	Unit A	Unit B	Unit C	Min.	Rated	Max.	Min.	Rated	Max.			Unit A	Unit B	Unit C	Min.	Rated	Max.	Min.	Rated	Max.		
22	2.00	-	-	1.58	2.00	2.90	0.40	0.62	0.77	3.23	-	2.50	-	-	1.64	2.50	2.90	0.40	0.67	0.84	3.73	-
25	2.50	-	-	1.58	2.50	3.20	0.40	0.77	0.97	3.23	-	3.00	-	-	1.64	3.00	3.20	0.40	0.80	1.01	3.73	-
35	3.50	-	-	1.58	3.50	3.90	0.40	1.08	1.30	3.23	-	3.80	-	-	1.64	3.80	3.90	0.40	1.02	1.22	3.73	-
50	5.00	-	-	1.78	5.00	6.50	0.50	1.55	1.78	3.23	-	5.20	-	-	1.89	5.20	7.22	0.50	1.39	1.59	3.75	-
22+22	2.10	2.10	-	2.22	4.20	6.33	0.64	1.30	2.08	3.23	5.6/A+	2.50	2.50	-	2.30	5.00	6.56	0.57	1.35	1.87	3.71	3.8/A
22+25	2.06	2.64	-	2.22	4.70	6.73	0.64	1.46	2.20	3.23	5.6/A+	2.45	3.15	-	2.30	5.60	6.98	0.57	1.51	1.98	3.71	3.8/A
22+35	1.95	3.35	-	2.22	5.30	7.12	0.64	1.64	2.45	3.23	5.6/A+	2.21	3.79	-	2.30	6.00	7.39	0.57	1.62	2.20	3.71	3.8/A
22+50	1.82	4.68	-	2.22	6.50	7.91	0.64	2.01	2.69	3.23	5.6/A+	1.96	5.04	-	2.30	7.00	8.21	0.57	1.89	2.42	3.71	3.8/A
25+25	2.65	2.65	-	2.22	5.30	7.12	0.64	1.64	2.45	3.23	5.6/A+	3.00	3.00	-	2.30	6.00	7.39	0.57	1.62	2.20	3.71	3.8/A
25+35	2.57	3.43	-	2.22	6.00	7.52	0.64	1.86	2.57	3.23	5.6/A+	2.70	3.60	-	2.30	6.30	7.80	0.57	1.70	2.31	3.71	3.8/A
25+50	2.27	4.53	-	2.22	6.80	7.91	0.64	2.11	2.69	3.23	5.6/A+	2.33	4.67	-	2.30	7.00	8.21	0.57	1.89	2.42	3.71	3.8/A
35+35	3.15	3.15	-	2.22	6.30	7.68	0.64	1.95	2.65	3.23	5.6/A+	3.25	3.25	-	2.30	6.50	7.96	0.57	1.75	2.38	3.71	3.8/A
35+50	2.72	4.08	-	2.22	6.80	7.91	0.64	2.11	2.69	3.23	5.6/A+	2.80	4.20	-	2.30	7.00	8.21	0.57	1.89	2.42	3.71	3.8/A
22+22+22	2.43	2.43	2.43	2.77	7.30	8.70	0.76	2.26	2.92	3.23	6.1/A++	2.73	2.73	2.73	2.87	8.20	9.85	0.68	2.21	2.75	3.71	4.0/A+
22+22+25	2.25	2.25	2.90	2.77	7.40	8.70	0.76	2.29	2.92	3.23	6.1/A++	2.50	2.50	3.21	2.87	8.20	9.85	0.68	2.21	2.75	3.71	4.0/A+
22+22+35	2.13	2.13	3.65	2.77	7.90	8.70	0.76	2.45	2.92	3.23	6.1/A++	2.21	2.21	3.78	2.87	8.20	9.85	0.68	2.21	2.75	3.71	4.0/A+
22+22+50	1.73	1.73	4.44	2.77	7.90	8.70	0.76	2.45	2.92	3.23	6.1/A++	1.79	1.79	4.61	2.87	8.20	9.85	0.68	2.21	2.75	3.71	4.0/A+
22+25+25	2.13	2.74	2.74	2.77	7.60	8.70	0.76	2.35	2.92	3.23	6.1/A++	2.30	2.95	2.95	2.87	8.20	9.85	0.68	2.21	2.75	3.71	4.0/A+
22+25+35	1.98	2.54	3.39	2.77	7.90	8.70	0.76	2.45	2.92	3.23	6.1/A++	2.05	2.64	3.51	2.87	8.20	9.85	0.68	2.21	2.75	3.71	4.0/A+
22+25+50	1.63	2.09	4.18	2.77	7.90	8.70	0.76	2.45	2.92	3.23	6.1/A++	1.69	2.17	4.34	2.87	8.20	9.85	0.68	2.21	2.75	3.71	4.0/A+
22+35+35	1.78	3.06	3.06	2.77	7.90	8.70	0.76	2.45	2.92	3.23	6.1/A++	1.85	3.17	3.17	2.87	8.20	9.85	0.68	2.21	2.75	3.71	4.0/A+
25+25+25	2.64	2.64	2.64	2.77	7.91	8.70	0.76	2.45	2.92	3.23	6.3/A++	2.74	2.74	2.74	2.87	8.21	9.85	0.68	2.20	2.75	3.73	4.0/A+
25+25+35	2.37	2.37	3.16	2.77	7.90	8.70	0.76	2.45	2.92	3.23	6.3/A++	2.46	2.46	3.28	2.87	8.20	9.85	0.68	2.20	2.75	3.73	4.0/A+
25+35+35	2.15	2.87	2.87	2.77	7.90	8.70	0.76	2.45	2.92	3.23	6.3/A++	2.24	2.98	2.98	2.87	8.20	9.85	0.68	2.20	2.75	3.73	4.0/A+
35+35+35	2.63	2.63	2.63	2.77	7.90	8.70	0.76	2.45	2.92	3.23	6.3/A++	2.73	2.73	2.73	2.87	8.20	9.85	0.68	2.20	2.75	3.73	4.0/A+

Based on HDMB Harmonia wall mounted combination

ZDAA

Combination capacities



Compatible
WITH:

> High wall HDHC Artica
25/35/50/70



> High wall HDMB
Harmonia
25/35/50/70



White



Mirror



Grey

> High wall HDLA
22/25/35/50/70



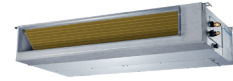
> Console XDMX
35/50



> Floor ceiling
FDMX 50/70



> Ducted DDMX
22/35/50/70



> Cassette CDMX
22/25/35/50/70



ZDAA-4090 MULTISPLIT QUATTRO

Indoor unit combination	COOLING											HEATING												
	Rated power (kW)				Total power (kW)			Total input power (kW)			EER	SEER/ Energy label	Rated power (kW)				Total power (kW)			Total input power (kW)			COP	SCOP/ Energy label
	Unit A	Unit B	Unit C	Unit D	Min.	Rated	Max.	Min.	Rated	Max.			Unit A	Unit B	Unit C	Unit D	Min.	Rated	Max.	Min.	Rated	Max.		
22	2.00	-	-	-	1.58	2.00	2.90	0.45	0.61	0.76	3.28	-	2.50	-	-	-	1.58	2.50	2.90	0.45	0.67	0.84	3.71	-
25	2.50	-	-	-	1.58	2.50	3.20	0.45	0.76	0.95	3.28	-	3.00	-	-	-	1.58	3.00	3.20	0.45	0.81	1.01	3.71	-
35	3.50	-	-	-	1.58	3.50	3.90	0.45	1.07	1.28	3.28	-	3.80	-	-	-	1.58	3.80	3.90	0.45	1.02	1.23	3.71	-
50	5.00	-	-	-	1.79	5.00	6.50	0.58	1.52	1.75	3.28	-	5.20	-	-	-	1.79	5.20	7.00	0.55	1.40	1.61	3.71	-
70	7.00	-	-	-	2.21	7.00	8.00	0.62	2.13	2.45	3.28	-	7.20	-	-	-	1.79	7.20	8.00	0.58	1.94	2.23	3.71	-
22+22	2.10	2.10	-	-	2.21	4.20	6.30	0.62	1.28	2.11	3.28	5.1/A	2.50	2.50	-	-	2.22	5.00	6.33	0.54	1.35	1.85	3.71	3.4/A
22+25	2.06	2.64	-	-	2.21	4.70	6.51	0.62	1.43	2.28	3.28	5.1/A	2.45	3.15	-	-	2.22	5.60	6.54	0.54	1.51	1.99	3.71	3.4/A
22+35	2.03	3.47	-	-	2.21	5.50	6.83	0.62	1.68	2.44	3.28	5.1/A	2.21	3.79	-	-	2.22	6.00	6.86	0.54	1.62	2.13	3.71	3.4/A
22+50	1.96	5.04	-	-	2.21	7.00	8.40	0.62	2.13	2.86	3.28	5.2/A	2.24	5.76	-	-	2.22	8.00	8.44	0.54	2.16	2.50	3.71	3.4/A
22+70	2.03	6.97	-	-	2.21	9.00	9.45	0.62	2.74	3.06	3.28	5.2/A	2.17	7.43	-	-	2.22	9.60	10.23	0.54	2.59	2.67	3.71	3.4/A
25+25	2.65	2.65	-	-	2.21	5.30	6.83	0.62	1.62	2.44	3.28	5.2/A	3.00	3.00	-	-	2.22	6.00	6.86	0.54	1.62	2.13	3.71	3.4/A
25+35	2.57	3.43	-	-	2.21	6.00	7.35	0.62	1.83	2.60	3.28	5.2/A	3.00	4.00	-	-	2.22	7.00	7.39	0.54	1.89	2.27	3.71	3.4/A
25+50	2.50	5.00	-	-	2.21	7.50	9.45	0.62	2.29	2.93	3.28	5.2/A	2.93	5.87	-	-	2.22	8.80	9.50	0.54	2.37	2.56	3.71	3.4/A
25+70	2.59	6.91	-	-	2.21	9.50	9.98	0.62	2.90	3.12	3.28	5.2/A	2.67	7.13	-	-	2.22	9.80	10.13	0.54	2.64	2.70	3.71	3.4/A
35+35	3.50	3.50	-	-	2.21	7.00	7.88	0.62	2.13	2.76	3.28	5.2/A	3.75	3.75	-	-	2.22	7.50	7.91	0.54	2.02	2.42	3.71	3.4/A
35+50	3.40	5.10	-	-	2.21	8.50	9.98	0.62	2.59	2.93	3.28	5.2/A	3.76	5.64	-	-	2.22	9.40	10.02	0.54	2.53	2.56	3.71	3.4/A
50+70	3.33	6.67	-	-	2.21	10.00	10.50	0.62	3.09	3.19	3.24	5.2/A	3.33	6.67	-	-	2.22	10.00	10.34	0.54	2.70	2.79	3.71	3.4/A
50+50	5.00	5.00	-	-	2.21	10.00	10.50	0.62	3.09	3.25	3.24	5.2/A	5.05	5.05	-	-	2.22	10.10	10.55	0.54	2.72	2.84	3.71	3.5/A
22+22+22	2.00	2.00	2.00	-	2.84	6.00	7.35	0.78	1.80	2.93	3.33	5.6/A+	2.50	2.50	2.50	-	2.85	7.50	7.39	0.68	2.02	2.56	3.71	3.6/A
22+22+25	1.98	1.98	2.54	-	2.84	6.50	7.88	0.78	1.98	3.09	3.28	5.6/A+	2.37	2.37	3.05	-	2.85	7.80	7.91	0.68	2.10	2.70	3.71	3.6/A
22+22+35	2.02	2.02	3.46	-	2.84	7.50	8.93	0.78	2.29	3.25	3.28	5.6/A+	2.29	2.29	3.92	-	2.85	8.50	8.97	0.68	2.29	2.84	3.71	3.6/A
22+22+50	1.97	1.97	5.06	-	2.84	9.00	11.55	0.78	2.74	3.58	3.28	5.8/A+	2.34	2.34	6.02	-	2.85	10.70	11.61	0.68	2.88	3.13	3.71	3.6/A
22+22+70	1.84	1.84	6.32	-	2.84	10.00	11.55	0.78	3.09	3.58	3.24	5.8/A+	1.97	1.97	6.76	-	2.85	10.70	11.61	0.68	2.88	3.13	3.71	3.6/A
22+25+25	1.96	2.52	2.52	-	2.84	7.00	8.93	0.78	2.13	3.25	3.28	5.8/A+	2.38	3.06	3.06	-	2.85	8.50	8.97	0.68	2.29	2.84	3.71	3.6/A
22+25+35	2.00	2.57	3.43	-	2.84	8.00	9.98	0.78	2.44	3.41	3.28	5.8/A+	2.50	3.21	4.29	-	2.85	10.00	10.02	0.68	2.70	2.99	3.71	3.6/A
22+25+50	1.96	2.51	5.03	-	2.84	9.50	11.55	0.78	2.93	3.58	3.24	5.8/A+	2.20	2.83	5.66	-	2.85	10.70	11.61	0.68	2.88	3.13	3.71	3.6/A

Optimum combinations

