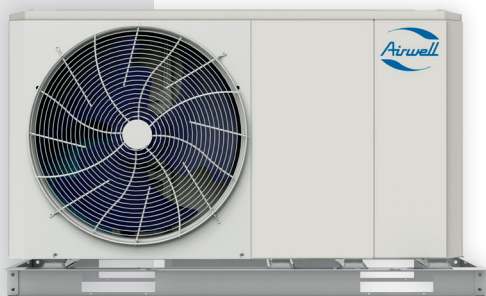




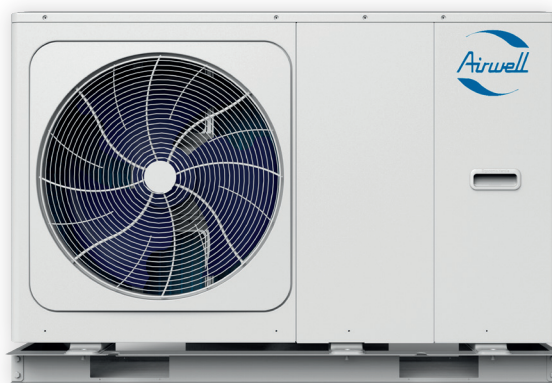
Heat pumps
Cooling
and heating

WELLEA MONOBLOC

MONOBLOC HEAT PUMP



4-6 kW



8-16 kW



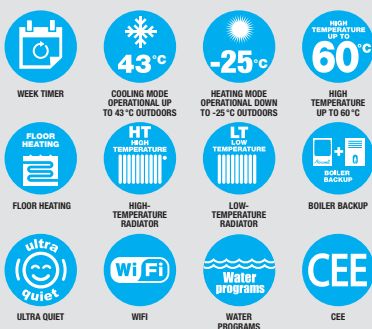
COP up to 5.10

EER up to 5.50

+ PRODUCTS

- Remote control included
- Water at up to 60°C at outdoor temperatures down to -15°C
- Compatible with all types of emitter
- Electric heater included from 8kW

FEATURES



THE «SUSTAINABLE DEVELOPMENT»

→ High energy class A+++

THE «USER»

- Compatible with all emitters
- Great flexibility of use
- Perfect for replacing an oil or gas burner

THE «INSTALLER»

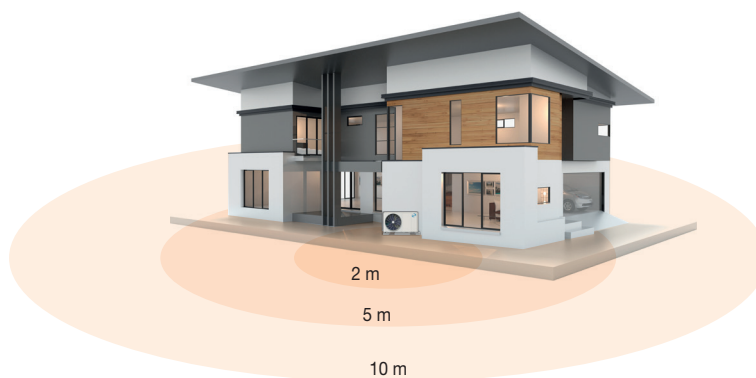
→ Customisable water program, allowing the entire heating circuit to be managed using the many available connections

THE «TECHNOLOGY»

- Operates at outdoor temperatures down to -25°C
- HP Keymark certified



SOUND PRESSURE



Wellea Monobloc A		4 kW	6 kW	8 kW	10 kW	12 kW	14 kW	16 kW
Sound pressure* at 2 m	dB(A)	39	40	43	44	46	47	51
Sound pressure* at 5 m	dB(A)	30	31	34	35	37	38	42
Sound pressure* at 10 m	dB(A)	15	16	19	20	22	23	27

*Free fields

* Available during 2021.

Airwell
Just feel well



WELLEAMONOBLOC 4-6-8-10 KW TECHNICAL DATA

Model		AW-WHPMA04-H91	AW-WHPMA06-H91	AW-WHPMA08-H91	AW-WHPMA10-H91	
Part number		7HP061075	7HP061076	7HP061077	7HP061078	
Phase		Single phase	Single phase	Single phase	Single phase	
HEATING MODE						
Air +7°C Water 30/35°C	Heating capacity	kW	4.20	6.35	8.40	10.00
	Power input	kW	0.82	1.28	1.63	2.02
	COP		5.10	4.95	5.15	4.95
Air -7°C Water 30/35°C	Heating capacity	kW	4.70	6.00	7.00	8.00
	Power input	kW	1.52	2.00	2.19	2.62
	COP		3.10	3.00	3.20	3.05
Air +7°C Water 40/45°C	Heating capacity	kW	4.30	6.30	8.10	10.00
	Power input	kW	1.13	1.70	2.10	2.67
	COP		2.70	3.80	3.70	3.85
Air +7°C Water 47/55°C	Heating capacity	kW	4.40	6.00	7.50	9.50
	Power input	kW	1.49	2.03	2.36	3.06
	COP		2.95	2.95	3.18	3.10
COOLING MODE						
Air 35°C Water 12/7°C	Cooling capacity	kW	4.70	7.00	7.45	8.20
	Power input	kW	1.36	2.33	2.22	2.52
	EER		3.45	3.00	3.35	3.25
Air 35°C Water 23/18°C	Cooling capacity	kW	4.50	6.50	8.30	9.90
	Power input	kW	0.82	1.35	1.64	2.18
	EER		5.50	4.80	5.05	4.55
PERFORMANCE						
Energy label (average climate)	Water outlet to 35°C	class	A+++			
	Water outlet to 55°C	class	A++			
Seasonal efficiency (average climate)	Water outlet to 35°C		191	195	205	205
	Water outlet to 55°C		130	138	132	137
SCOP (average climate)	Water outlet to 35°C		4.85	4.95	5.21	5.19
	Water outlet to 55°C		3.31	3.52	3.36	3.49
Sound level		dB(A)	55	58	59	60
Sound pressure level (1m)		dB(A)	45	48	49	51
OPERATING LIMITS						
Outdoor air temperature	Cooling	°C	-5/43			
	Heating	°C	-25/35			
	DHW	°C	-25/43			
POWER SUPPLY						
Power supply			1P/220-240V/50Hz			
Electric backup heater	kW		0		3	
Max. current	A		12.00	14.00	29.00	30.00
INSTALLATION & OTHERS						
Airflow		m³/h	2770		4030	
Refrigerant	Type/GWP		R32/675			
	Charge	kg	1.4		1.4	
Outline dimensions (WxHxD)	mm		1295x792x429		1385x945x526	
Package dimensions (WxHxD)	mm		1375x965x475		1465x1120x560	
Net weight/Gross weight	kg		98/121		121/148	
Water connection	inches		R 1"		R 1"1/4	

WELLEA MONOBLOC 12-14-16 KW TECHNICAL DATA

Model		AW-WHPMA12-H91	AW-WHPMA14-H91	AW-WHPMA16-H91	AW-WHPMA12-H93	AW-WHPMA14-H93	AW-WHPMA16-H93	
Part number		7HP061079	7HP061080	7HP061081	7HP061082	7HP061083	7HP061084	
Phase		Single phase			Three phase			
HEATING MODE								
Air +7°C Water 30/35°C	Heating capacity	kW	12.10	14.50	15.90	12.10	14.50	15.90
	Power input	kW	2.44	3.15	3.53	2.44	3.15	3.53
	COP		4.95	4.60	4.50	4.95	4.60	4.50
Air -7°C Water 30/35°C	Heating capacity	kW	10.00	12.00	13.10	10.00	12.00	13.10
	Power input	kW	3.33	4.21	4.85	3.33	4.21	4.85
	COP		3.00	2.85	2.70	3.00	2.85	2.70
Air +7°C Water 40/45°C	Heating capacity	kW	12.30	14.10	16.00	12.30	14.10	16.00
	Power input	kW	3.32	3.92	4.57	3.32	3.92	4.57
	COP		3.75	3.70	3.50	3.75	3.70	3.50
Air +7°C Water 47/55°C	Heating capacity	kW	11.90	13.80	16.00	11.90	13.80	16.00
	Power input	kW	3.90	4.68	5.61	3.90	4.68	5.61
	COP		3.05	2.95	2.85	3.05	2.95	2.85
COOLING MODE								
Air 35°C Water 12/7°C	Cooling capacity	kW	11.50	12.40	14.00	11.50	12.40	14.00
	Power input	kW	4.18	4.96	5.60	4.18	4.96	5.60
	EER		2.75	2.50	2.50	2.75	2.50	2.50
Air 35°C Water 23/18°C	Cooling capacity	kW	12.00	13.50	14.90	12.00	13.50	14.90
	Power input	kW	3.04	3.75	4.38	3.04	3.75	4.38
	EER		3.95	3.60	3.40	3.95	3.60	3.40
PERFORMANCE								
Energy label (average climate)	Water outlet to 35°C	class	A+++					
	Water outlet to 55°C	class	A++					
Seasonal efficiency (average climate)	Water outlet to 35°C		189	186	182	189	186	182
	Water outlet to 55°C		135	136	133	135	136	133
SCOP (average climate)	Water outlet to 35°C		4.81	4.72	4.62	4.81	4.72	4.62
	Water outlet to 55°C		3.45	3.47	3.41	3.45	3.47	3.41
Sound level		dB(A)	65	65	68	65	65	68
Sound pressure level (1m)		dB(A)	53	54	58	54	54	58
OPERATING LIMITS								
Outdoor air temperature	Cooling	°C	-5/43					
	Heating	°C	-25/35					
	DHW	°C	-25/43					
POWER SUPPLY								
Power supply			1P/220-240V/50Hz			3P/380-415V/50Hz		
Electric backup heater	kW		3			9		
Max. current	A		38.00	39.00	40.00	23.00	24.00	25.00
INSTALLATION & OTHERS								
Airflow		m³/h	4060		4650	4060		4650
Refrigerant	Type/GWP		R32/675					
	Charge	kg	1.75					
Outline dimensions (WxHxD)		mm	1385x945x526					
Package dimensions (WxHxD)		mm	1465x1120x560					
Net weight/Gross weight		kg	144/170			160/188		
Water connection		inches	R 1"1/4			R 1"1/4		

HEAT PUMPS ACCESSORIES

Designation	Part number	Photo	Description
Bizone Kit 2Z2T	7ACEL1882		<p>With this module you can simply manage 2 zones with 2 different temperatures (ex: floor heating & radiator). All the elements are pre-wired, you just have to plug them in on site.</p> <p>1 Hydraulic module :</p> <ul style="list-style-type: none"> - 2 water pump - 1 regulation - 2 thermostats (radio) - 1 outdoor temperature sensor (radio) - 1 antenna (for radio connection) <p>Thermostat functions :</p> <ul style="list-style-type: none"> - Change temperature (5°C to 37 °C) - Change mode (heating / cooling) - Weekly programming - Holiday mode
Hydraulic compensator	7ACFH0854		<p>To be use with the Bizone Kit. If you don't have buffer tank you can use this bottle. Easely paring with our Bizone Kit. Insulation included. 14 kW ΔT 5°C – 28 kW ΔT 10°C</p>
Shock absorder (support)	7ACTL0510		<p>Helps reduce the transmission of vibrations. Length : 1 000mm</p>
Temperature sensor	1PR070230		Temperature sensor + wire (10m)
Wire connection (Balance tank)	7ACFH0870		Connection between temperature sensor and electronic board for balance tank probe
Wire connection (Solar)	7ACFH0871		Connection between temperature sensor and electronic board for solar probe
Controller for E-Heater	7ACEL1892		Control the DHW electric heater with the heat pump

Designation		DHW TANK 200L	DHW TANK 200S	DHW TANK 300L	DHW TANK 300S	DHW TANK 500L	DHW TANK 500S
Part number		7ACFH0872	7ACFH0876	7ACFH0873	7ACFH0875	7ACFH0874	7ACFH0877
Heat pump max. capacity	kW	10	10	16	16	22	22
Capacity	L	196	194	273	267	475	464
Surface of exchanger	m ²	1,5	1,5+0,5	1,8	1,8+1,1	2,2	2,2+1,3
Material	/	Enamel steel	Enamel steel	Enamel steel	Enamel steel	Enamel steel	Enamel steel
Max pressure	bar	10	10	10	10	10	10
Storage dispersion	W	51	51	63	63	80	80
Energy class	/	B	B	B	B	B	B
Protection	/	Magnesium anode	Magnesium anode	Magnesium anode	Magnesium anode	Magnesium anode	Magnesium anode
Electric heater	kW	2,0	2,0	2,0	2,0	2,0	2,0
Height	mm	1215	1215	1615	1615	1705	1705
Diameter	mm	640	640	640	640	790	790
Weight	kg	77	83	98	112	128	151



WELLEA ACCESSORIES

Designation	Part number	Photo	Description
3 ways valve	7ACFH0855		<ul style="list-style-type: none"> • 3 ways valve for heating and DHW
Magnetic dirt separator 1"	7ACFH0856		<ul style="list-style-type: none"> • Dirt separator, swiveling, with magnetic ring
Antifreeze valve MM 1"	7ACFH0857		<ul style="list-style-type: none"> • Ready to install • Thermostatic valve • Automatic opening (+ 3 ° C) and closing (+ 4 ° C) (+/- 1 ° C)
Mix bottle 25L	7ACFH0859		<ul style="list-style-type: none"> • Insulated bottle, reversible: heating and cooling • ErP class: C • Usable volume: 25 L • Wall installation
Mix bottle 50L	7ACFH0858		<ul style="list-style-type: none"> • Insulated bottle, reversible: heating and cooling • ErP class: C • Usable volume: 51 L • Wall installation
Mix bottle 100L	7ACFH0860		<ul style="list-style-type: none"> • Insulated bottle, reversible: heating and cooling • ErP class: C • Usable volume: 95 L • Floor laying
Mix bottle 200L	7ACFH0861		<ul style="list-style-type: none"> • Insulated bottle, reversible: heating and cooling • ErP class: C • Usable volume: 195 L • Floor laying
Automatic air vent 1"	7ACFH0862		<ul style="list-style-type: none"> • Continuous evacuation of air (degassing) present in the hydraulic circuit • Automatic operation • Adjustable: horizontal or vertical mounting
Safety valve 10B 20X27	7ACFH0863		<ul style="list-style-type: none"> • Plant power: 46 kW • Graduated scale for adjustment: 0.1 to 0.6 bar differential
Expansion vessel 12L	7ACFH0864		<ul style="list-style-type: none"> • CE standard vessel for heating and cooling circuit • Capacity: 12 L • Pre-inflation: 1 bar
Expansion vessel 18L	7ACFH0865		<ul style="list-style-type: none"> • CE standard vessel for heating and cooling circuit • Capacity: 18 L • Pre-inflation: 1 bar
Wall support for expansion vessel + accessories	7ACFH0866		<ul style="list-style-type: none"> • Stem, vase support, equipped with: <ul style="list-style-type: none"> - quick coupling for vase - air vent "PR2" - NC valve with pressure gauge
Backflow preventer 573 1/2	7ACFH0867		<ul style="list-style-type: none"> • Non-controllable reduced pressure zone backflow preventer NF
Water pump EVOSTA 2 4 à 7 mH2O 180 mm	7ACFH0868		<ul style="list-style-type: none"> • Low consumption electronic circulator (EEI <= 0.18) • For heating and air conditioning • With limescale protection during commissioning • 5 year warranty • Flow: 0.4 to 3.6 m3 / h • Manometric head: 4 to 6.9 mWC • 3 operating curves each with 3 speeds: <ul style="list-style-type: none"> - Proportional differential pressure - Constant differential pressure - Constant speed • Protection class: IP X5
Axial thermometer	7ACFH0869		<ul style="list-style-type: none"> • Axial thermometer 0 / 120°

Airwell

Just feel well

